

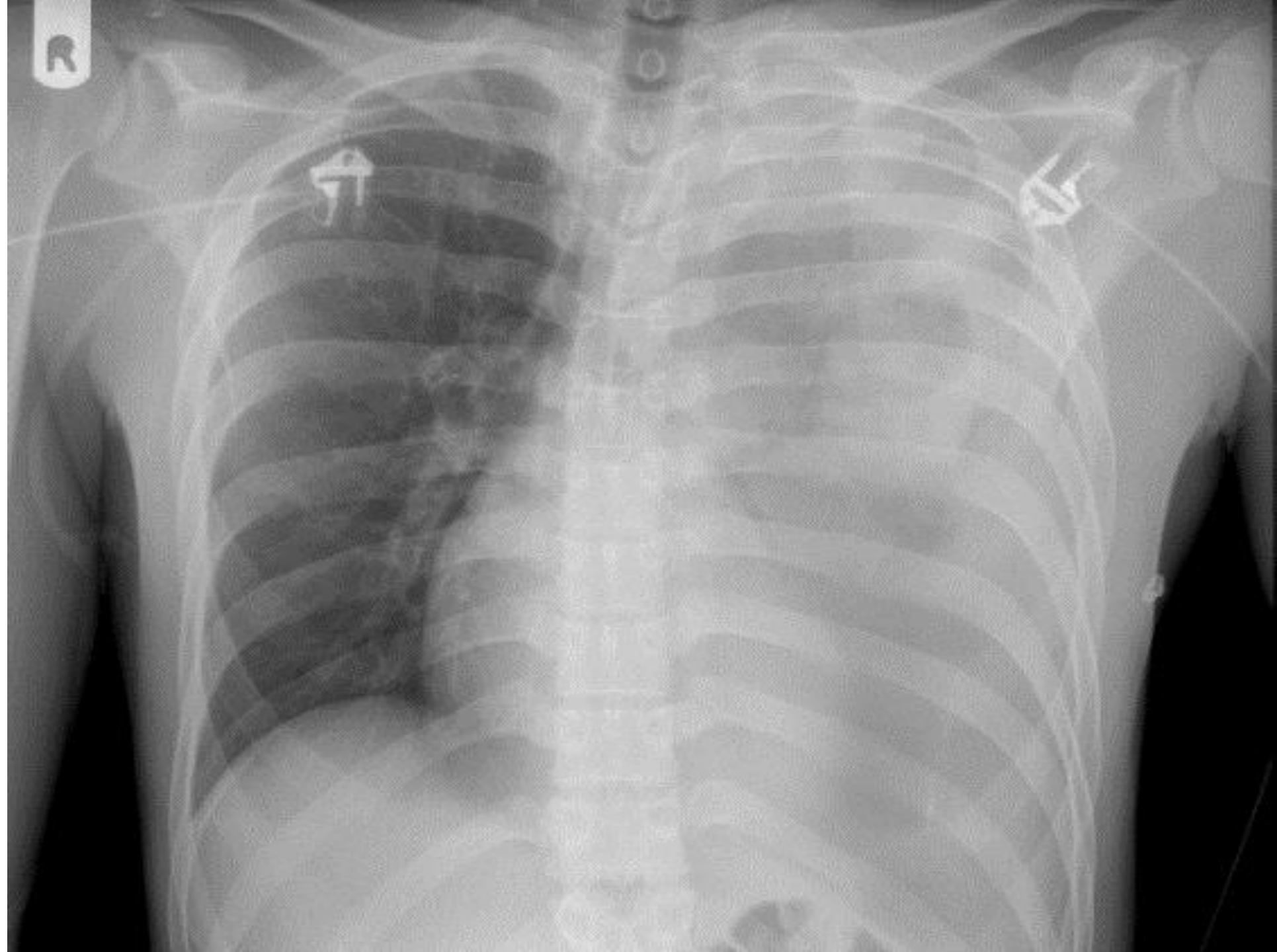
# Massive Hemothorax

Raywat Chunhasuwankul  
Division of Trauma Surgery  
Faculty of Medicine Siriraj Hospital



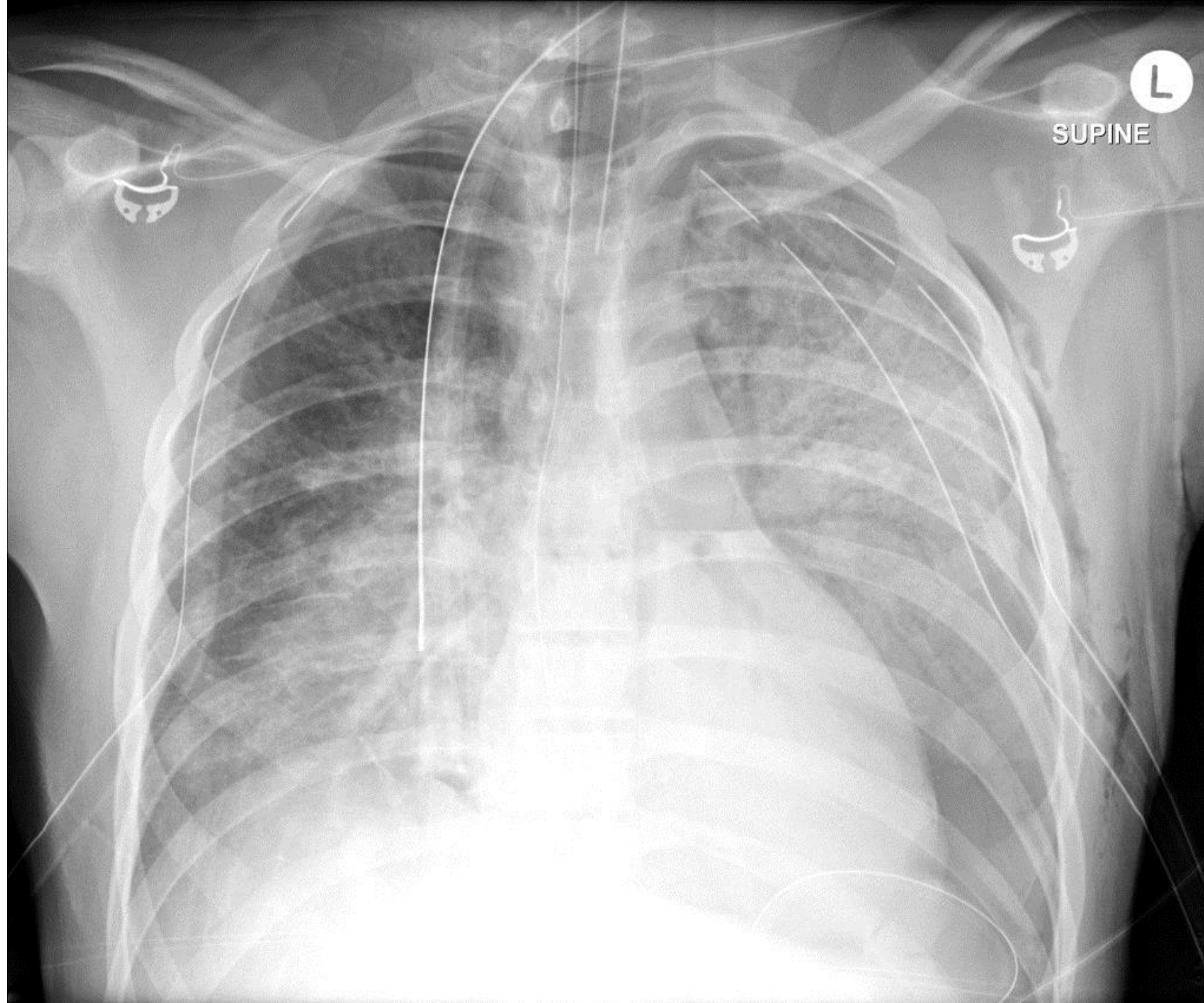
**How we missed hemothorax ???**

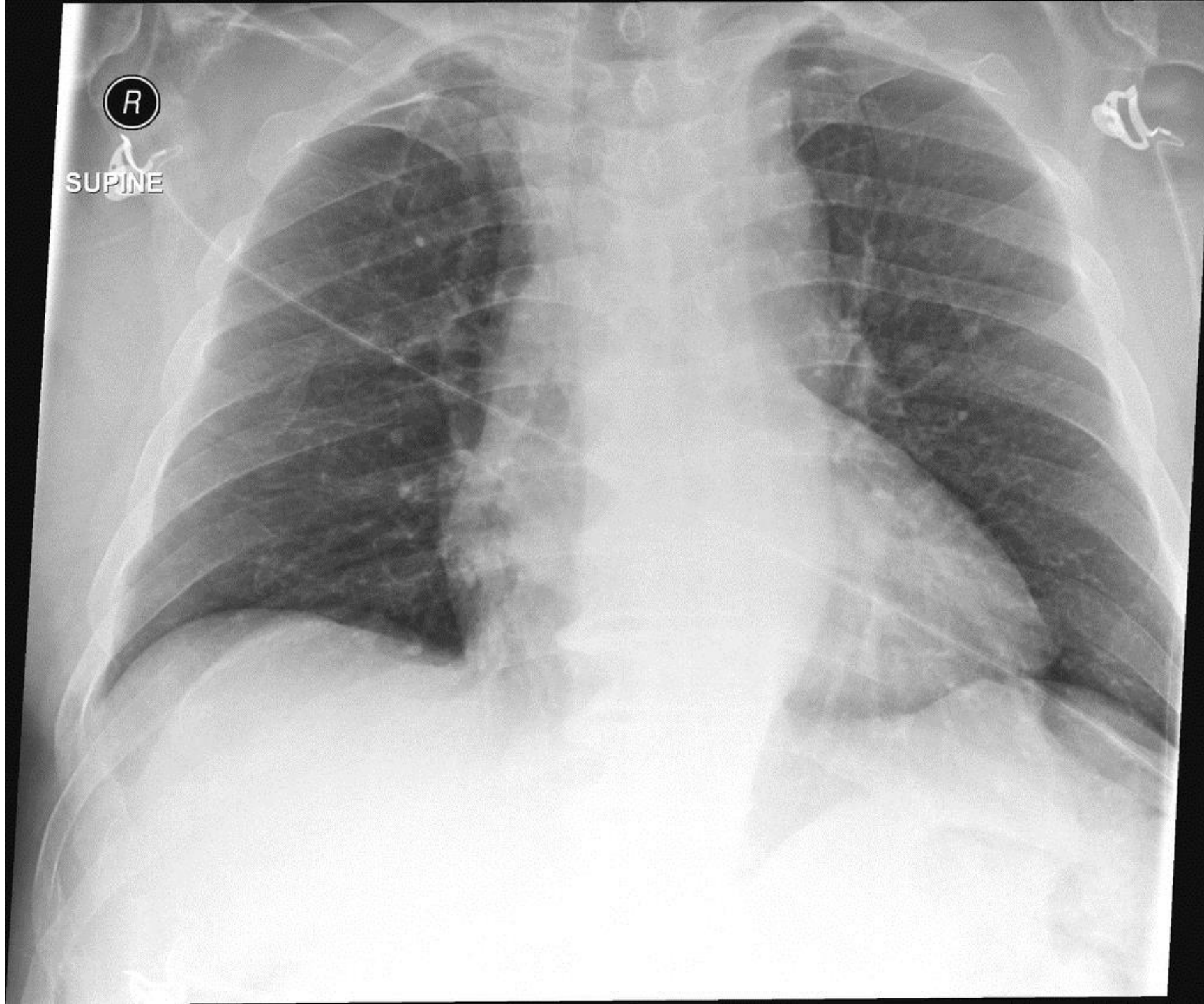














## Criteria

- Hemothorax > 30% of blood volume in first 2 hours
- Hemothorax > 20% of blood volume in first hour
- Hemothorax ; continuous bleeding > 200ml/hr for 3 hours

Management

**THORACOTOMY !!!!!**

Clamp ICD ???????

